

# PACIFIC CORPORATE CENTER

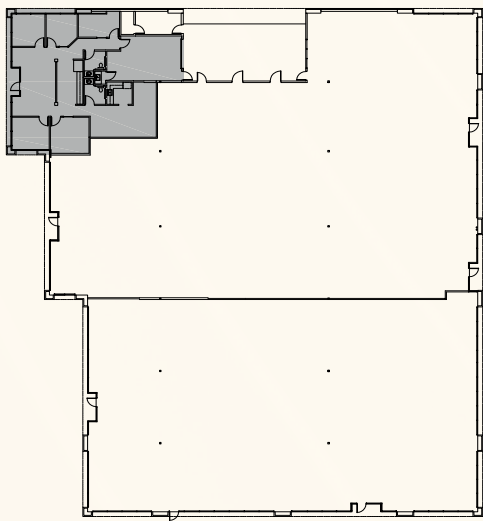
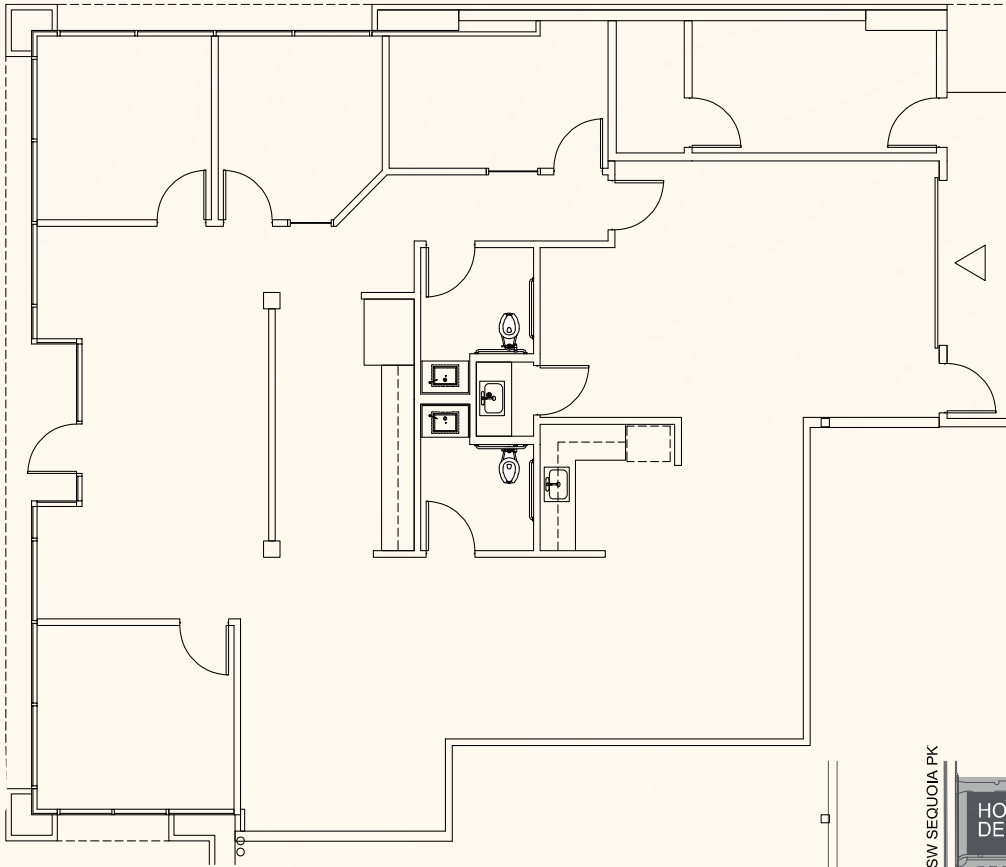
2,363 Sq. Ft.  
Office/Flex  
Space For Lease

14945 SW Sequoia Pkwy, Suite 180, Portland, OR 97224

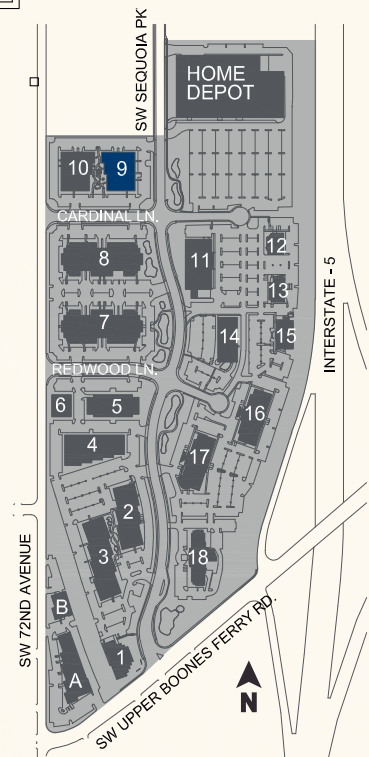
**PACTRUST**

### Space Plan | Suite 180

**PacTRUST**



**Building Plan**





# Key Features



2,363 sq. ft

Corner suite

1 grade door

Immediate access to I-5

Excellent glass line

Attractive landscaping with walking paths

Walkable environment offering a variety of amenities including Starbucks and adjacent to Gold's Gym

**Lease Rate:**  
**\$24.00/sq. ft./yr.**

**NNN Lease**



# Leasing Contacts

Jake Bigby

jakeb@pactrust.com

Caitlin Knecht

caitlink@pactrust.com

503.624.6300

www.pactrust.com

Owned & Managed by

**PacTrust**

Pacific Corporate Center  
Office/Flex Space For Lease

14945 SW Sequoia Pkwy  
Suite 180  
Portland, OR 97224

